



Government of India  
Ministry of Earth Sciences  
India Meteorological Department



Press Release

Date: 08<sup>th</sup> August, 2025

Time of Issue: 1330 hours IST

**Subject:** i) Isolated heavy to very heavy rainfall likely over Western Himalayan Region during next 7 days and over Uttar Pradesh on 08<sup>th</sup> & 09<sup>th</sup> August.  
ii) Heavy to very heavy rainfall likely to continue at isolated places over Sub Himalayan West Bengal, Sikkim & Bihar during next 7 days; over Northeast India during next 3 days and over Odisha, Jharkhand & Gangetic West Bengal on 08<sup>th</sup> August.  
iii) Subdued rainfall activities likely over Central India and Rajasthan during next 4-5 days.

**Realised weather during past 24 hours till 0830 hours IST of today, the 08<sup>th</sup> August, 2025:**

- ❖ Heavy to very heavy rainfall with extremely heavy falls ( $\geq 21$  cm) has been recorded at isolated places over East Uttar Pradesh.
- ❖ Heavy to very heavy rainfall (7-20 cm) has been recorded at isolated places over Sub-Himalayan West Bengal & Sikkim, Chhattisgarh, Bihar and Telangana; Heavy rainfall (7-11 cm) at isolated places over Uttarakhand, Gangetic West Bengal, East Madhya Pradesh, Odisha, Jharkhand, Vidarbha, Assam, Manipur, Marathwada, Nicobar Islands, Coastal Andhra Pradesh & Yanam, Rayalaseema, North Interior Karnataka and Tamil Nadu.

For more details of realised weather, kindly refer [Annexure I](#).

**i. Weather Systems, Forecast and Warnings (refer to Annexure II & III):**

- ❖ The western end of monsoon trough to the north of its normal position at mean sea level and eastern end runs to its near normal position.
  - ❖ A **Western Disturbance** seen as a cyclonic circulation over north Punjab & neighbourhood in middle tropospheric levels.
  - ❖ An **upper air cyclonic circulation** lies over Bangladesh & west Bengal coasts and adjoining areas of northwest Bay of Bengal in lower & middle tropospheric levels tilting southwestwards with height.
  - ❖ A **trough** runs from northeast Uttar Pradesh to south Bangladesh in lower tropospheric levels.
  - ❖ An **upper air cyclonic circulation** lies over north interior Karnataka in middle tropospheric levels.
  - ❖ An **upper air cyclonic circulation** lies over south coastal Andhra Pradesh in lower tropospheric levels.
  - ❖ A north-south **trough** runs from south Coastal Andhra Pradesh to north Sri Lanka in lower tropospheric levels.
  - ❖ A low pressure area is likely to form northwest & adjoining westcentral Bay of Bengal around 13<sup>th</sup> August, 2025.
- Under the influence of these systems, the following weather is likely:

**Northwest India:**

- ❖ **Extremely heavy rainfall ( $\geq 21$  cm) very likely at isolated places over East Uttar Pradesh on 08<sup>th</sup> August.**
- ❖ Isolated **heavy rainfall** likely over Himachal Pradesh & Uttarakhand during 08<sup>th</sup>-14<sup>th</sup>; Jammu-Kashmir during 09<sup>th</sup>-14<sup>th</sup>; Punjab on 10<sup>th</sup>; Haryana, Chandigarh on 11<sup>th</sup> & 13<sup>th</sup>; Uttar Pradesh on 08<sup>th</sup>, 09<sup>th</sup> & during 12<sup>th</sup>-14<sup>th</sup> August with **very heavy rainfall** over Jammu-Kashmir on 13<sup>th</sup> & 14<sup>th</sup>; Himachal Pradesh during 11<sup>th</sup>-14<sup>th</sup>; Uttarakhand on 08<sup>th</sup>, 10<sup>th</sup>, 11<sup>th</sup>, 13<sup>th</sup> & 14<sup>th</sup>; West Uttar Pradesh on 08<sup>th</sup>, 13<sup>th</sup> & 14<sup>th</sup>; East Uttar Pradesh on 12<sup>th</sup> & 13<sup>th</sup> August.

**Northeast India:**

- ❖ Light/moderate rainfall at many places accompanied with thunderstorm, lightning and isolated **heavy rainfall** likely to continue over Arunachal Pradesh, Assam & Meghalaya during 08<sup>th</sup>-14<sup>th</sup>; Nagaland, Manipur, Mizoram & Tripura on 08<sup>th</sup>, 09<sup>th</sup> & during 12<sup>th</sup>-14<sup>th</sup> August with isolated **very heavy rainfall over Arunachal Pradesh during 08<sup>th</sup>-10<sup>th</sup> and Assam & Meghalaya on 08<sup>th</sup>, 11<sup>th</sup> & 12<sup>th</sup> August.**

- ❖ Light/moderate rainfall at many places accompanied with thunderstorm & lightning likely over Western Himalayan region and many/some places over the plains during next 7 days.

#### South Peninsular India:

- ❖ Isolated **heavy rainfall** likely over Kerala & Mahe on 08<sup>th</sup>; Tamil Nadu, Rayalaseema on 08<sup>th</sup> & 09<sup>th</sup>; Coastal Karnataka on 14<sup>th</sup>; Interior Karnataka on 08<sup>th</sup> & 14<sup>th</sup>; Coastal Andhra Pradesh & Yanam on 08<sup>th</sup>, 09<sup>th</sup> & during 12<sup>th</sup>-14<sup>th</sup>; Telangana during 08<sup>th</sup>-14<sup>th</sup> August.
- ❖ Strong surface winds (speed reaching 40-50 kmph) very likely over South Peninsular India during next 2 days.
- ❖ Light to moderate rainfall at most/many places accompanied with thunderstorm & lightning likely over Tamil Nadu, Kerala & Mahe, Lakshadweep, Karnataka, Rayalaseema, Coastal Andhra Pradesh & Yanam and Telangana during next 5 days.

#### East & Central India:

- ❖ Isolated **heavy rainfall** likely over West Madhya Pradesh on 08<sup>th</sup> & 09<sup>th</sup>; East Madhya Pradesh on 08<sup>th</sup>, 09<sup>th</sup>, 13<sup>th</sup> & 14<sup>th</sup>; Vidarbha & Chhattisgarh on 08<sup>th</sup> & during 12<sup>th</sup>-14<sup>th</sup>; Sub-Himalayan West Bengal & Sikkim during 08<sup>th</sup>-14<sup>th</sup>; Bihar during 08<sup>th</sup>-13<sup>th</sup>; Odisha on 09<sup>th</sup> & during 12<sup>th</sup>-14<sup>th</sup>; Andaman & Nicobar Islands on 11<sup>th</sup>; Jharkhand on 12<sup>th</sup> August **with isolated very heavy rainfall over Sub-Himalayan West Bengal & Sikkim on 08<sup>th</sup>, 11<sup>th</sup> & 12<sup>th</sup>; Bihar, Jharkhand & Odisha on 08<sup>th</sup> August.**
- ❖ Light to moderate rainfall at most/many places accompanied with thunderstorm & lightning likely over the region during next 5 days.

#### West India:

- ❖ Isolated **heavy rainfall** likely over Madhya Maharashtra & Marathawada on 08<sup>th</sup>; Konkan & Goa during 12<sup>th</sup>-14<sup>th</sup> August.
- ❖ Light to moderate rainfall at many/some places very likely over the region during next 5-6 days.

#### Fishermen warning:

**Fishermen are advised to avoid venturing into the following from 08<sup>th</sup> August to 13<sup>th</sup> August 2025 to the following Areas:**

**Arabian Sea** Some parts of Northwest Arabian Sea adjoining Oman coasts during 09<sup>th</sup> to 13<sup>th</sup> August, some parts of southwest and westcentral Arabian Sea during 08<sup>th</sup> to 13<sup>th</sup> August.

Along and off the Somalia coast and adjoining sea areas during 08<sup>th</sup> to 13<sup>th</sup> August, along and off Oman coast during 09<sup>th</sup> to 13<sup>th</sup> of August.

#### **Bay of Bengal:**

Along and off north Odisha & west Bengal coast, northwest & adjoining northeast Bay of Bengal on 8<sup>th</sup> August and over some parts of Gulf of Mannar adjoining Comorin area and over Sri Lanka coasts, few parts of southwest Bay of Bengal during 08<sup>th</sup> to 13<sup>th</sup>; Over Andaman Sea during 11<sup>th</sup> to 13<sup>th</sup> August.

#### ii. Weather conditions and forecast over Delhi/NCR during 08<sup>th</sup> to 11<sup>th</sup> August, 2025 (Annexure IV)

**For more details, kindly refer National Weather Bulletin:**

[https://mausam.imd.gov.in/responsive/all\\_india\\_forecast\\_bulletin.php](https://mausam.imd.gov.in/responsive/all_india_forecast_bulletin.php)

**For District wise warnings refer:** <https://mausam.imd.gov.in/responsive/districtWiseWarningGIS.php>

**For Fishermen warning refer** <https://rsmcnewdelhi.imd.gov.in/fishermen-warning.php>

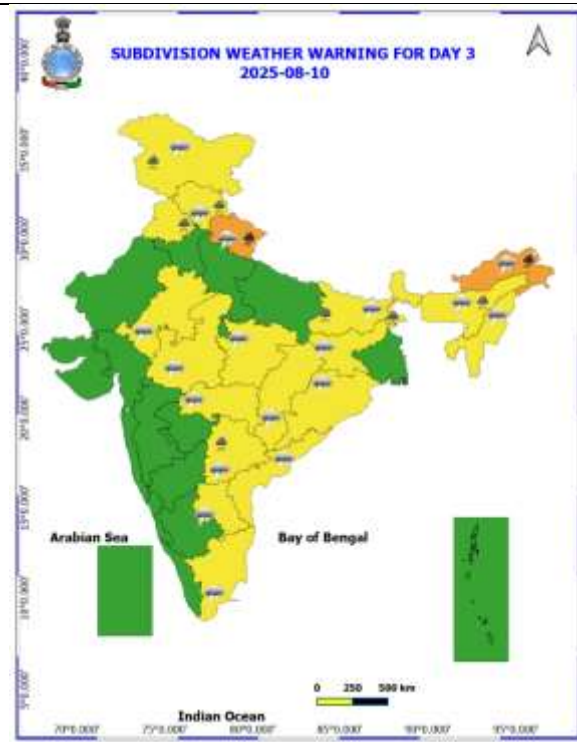
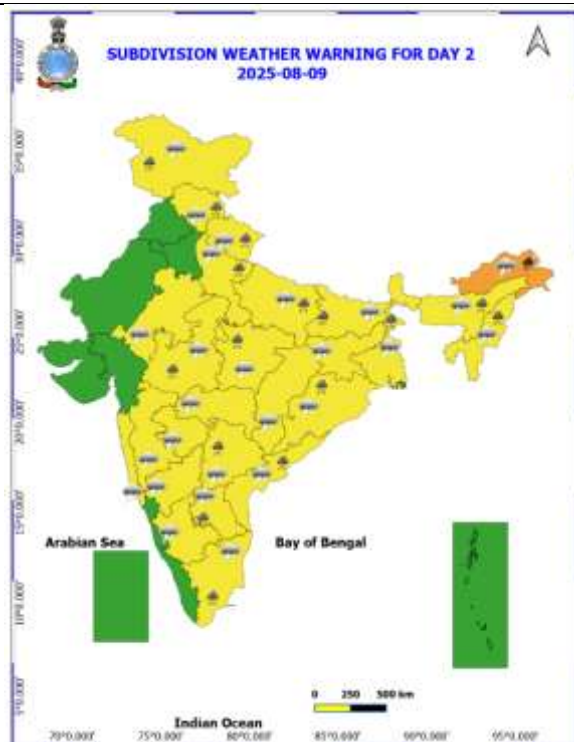
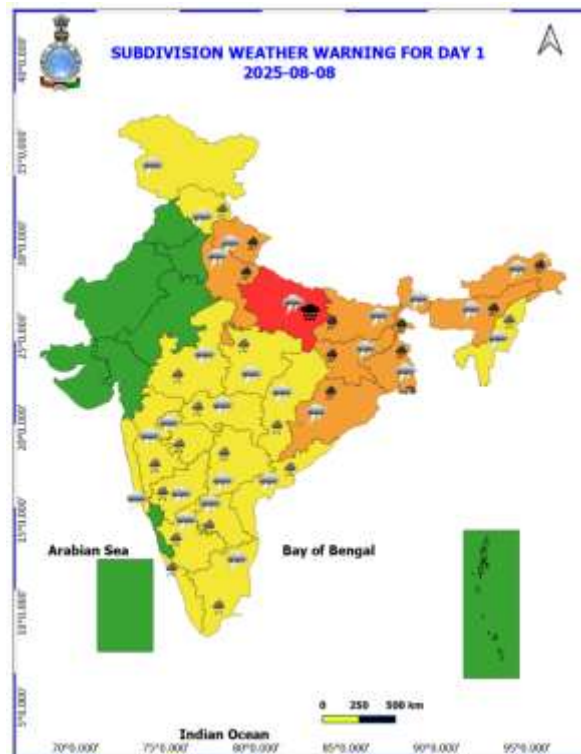
**Rainfall recorded (in cm) during past 24 hours till 0830 hours IST of today, the 08<sup>th</sup> August:**

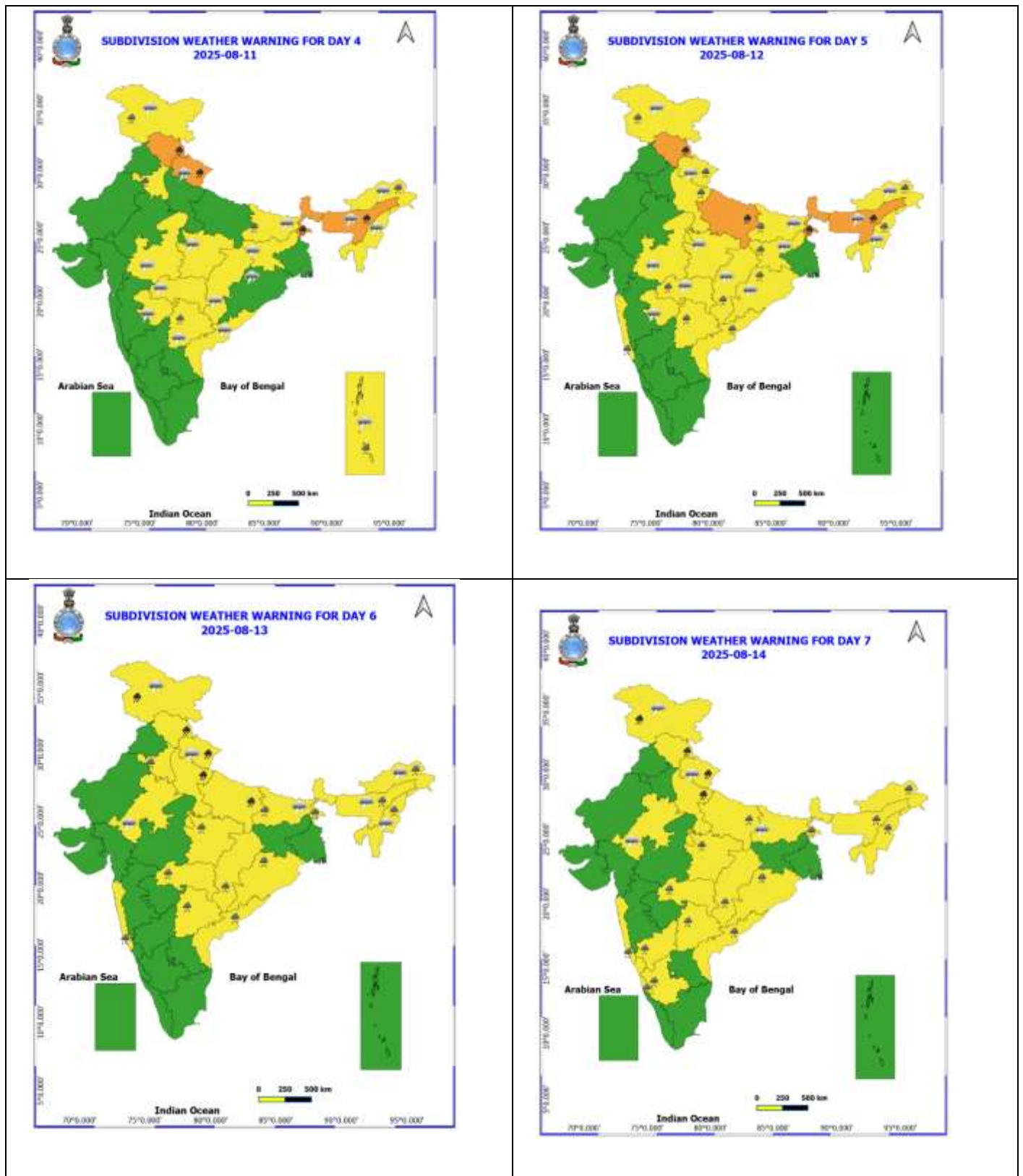
- ❖ **East Uttar Pradesh:** Colonalganj (dist Gonda) 21, Kaiserganj (dist Bahraich) 16, Lambhuaa (dist Sultanpur) 16, Ram Sanahi Ghat Tehsil (dist Barabanki) 14, Gonda Sadar (dist Gonda) 11, Ramnagar (dist Barabanki) 11, Sirauli Gauspur Tehsil (dist Barabanki) 9, Haidargarh (dist Barabanki) 8, Deogaon Lalganj (dist Azamgarh) 7, Nighasan (dist Kheri) 7, Mahsi (dist Bahraich) 7;
- ❖ **Sub-Himalayan West Bengal & Sikkim:** Buxaduar (dist Alipurduar) 15, Siliguri Pto (dist Darjeeling) 14, Toorsa Tea Garden (dist Alipurduar) 11, Banarhat High School (dist Jalpaiguri) 11, Palashbari Tea Estate (dist Jalpaiguri) 11, Champasari (dist Darjeeling) 9, Oodlabari Tea Estate (dist Jalpaiguri) 9, Namthang (dist Namchi) 9, Ghatia T.e. (dist Jalpaiguri) 8, Kalimpong (dist Kalimpong) 8, Amfu Kalimpong (dist Kalimpong) 8, Diana Tea Estate (dist Jalpaiguri) 8, Bagdogra Iaf (dist Darjeeling) 7, Chengmari/diana (dist Jalpaiguri) 7, Jaybirpara Tea Estate (dist Alipurduar) 7, Hilla T.e. (dist Jalpaiguri) 7, Gajoldoba (dist Jalpaiguri) 7, Chalouni Tea Estate (dist Jalpaiguri) 7, Mekhliganj (dist Cooch Behar) 7, Gandrapara Tea Garden (dist Jalpaiguri) 7, Kailashpur Tea Estate (dist Jalpaiguri) 7, Domohani (dist Jalpaiguri) 7;
- ❖ **Telangana:** Atmakur M (dist Y. Bhuvanagiri) 14, Kodada (dist Suryapet) 13, Jadcherla (dist Mahabubnagar) 13, Amberpet (dist Hyderabad) 13, Shekpet (dist Hyderabad) 13, Sarooranagar (dist Rangareddy) 12, Alladurg (dist Medak) 12, Devaruppal (dist Jangaon) 10, Mudhole (dist Nirmal) 10, Shadnagar (dist Rangareddy) 9, Kodakandla (dist Jangaon) 9, Jajireddigudem (dist Suryapet) 8, Nawabpetmbn (dist Mahabubnagar) 8, Pebbair (dist Wanaparthy) 8, Addakal (dist Mahabubnagar) 8, Narsapur (dist Medak) 8, Bala Nagar (dist Mahabubnagar) 8, Banswada (dist Kamareddy) 8, Bhuvanagiri (dist Y. Bhuvanagiri) 8, Jangaon (dist Jangaon) 8, Golkonda(arg) (dist Hyderabad) 8, Veepangandla (dist Wanaparthy) 8, Hanamkonda (dist Hanumakonda) 8, Golkonda (dist Hyderabad) 7, Chilkur (dist Suryapet) 7, Dharmasagar (dist Hanumakonda) 7, Mothey (dist Suryapet) 7, Shadnagar(arg) (dist Rangareddy) 7, Chegunta (dist Medak) 7, Hasanparthy (dist Hanumakonda) 7, Navipet (dist Nizamabad) 7, Bachhanpet (dist Jangaon) 7, Raghunathpalle (dist Jangaon) 7, Wanaparthy (dist Wanaparthy) 7, Kammar Palle (dist Nizamabad) 7, Bhoothpur (dist Mahabubnagar) 7, Noothankal (dist Suryapet) 7, Ghanpur (dist Jangaon) 7, Hyderabad A.p. (dist Hyderabad) 7;
- ❖ **Chhattisgarh:** Orcha (dist Narayanpur) 12, Bastar (dist Bastar) 7, Kusmi (dist Balrampur) 7, Kohkameta (dist Narayanpur) 7, Karpawand (dist Bastar) 7, Wandrafanagar (dist Balrampur) 7, Mainpur (dist Gariaband) 7;
- ❖ **Bihar:** Madanpur (dist Aurangabad) 12, Bokhara (dist Sitamarhi) 11, Araria (dist Araria) 10, Aurangabad (dist Aurangabad) 8, Dumraon (dist Buxar) 8, Runnisaidpur (dist Sitamarhi) 7, Bhagwanpur Hat (dist Siwan) 7, Daudnagar (dist Aurangabad) 7;
- ❖ **Jharkhand:** Barkisuriya (dist Giridih) 11, Simdega (dist Simdega) 10, Ghatsila (dist East Singhbhum) 10, Panki (dist Palamu) 7, Baharagora (dist East Singhbhum) 7;
- ❖ **Royalaseema:** Kodur (dist Ysr District) 11, Chinnamandem (dist Annamayya District) 9, Tirupati Aero (dist Tirupati) 9, Vempalle (dist Ysr District) 8, Rajampet (dist Annamayya District) 7;
- ❖ **Manipur:** Chandel (dist Chandel) 11, Chandel\_aws (dist Chandel) 7;
- ❖ **Assam:** Dhemaji (dist Dhemaji) 9, Shillongani\_aws (dist Nagaon) 7;
- ❖ **Gangetic West Bengal:** Contai (dist East Midnapore) 11, Sagar Island Pto (dist South 24 Parganas) 7;
- ❖ **Coastal Andhra Pradesh & Yanam:** Paleru Bridge (dist Ntr District) 10, Udayagiri (dist Spsr Nellore) 10, Atmakur (dist Spsr Nellore) 8, Markapur (dist Prakasam) 7, Nandigama (dist Ntr District) 7;
- ❖ **East Madhya Pradesh:** Rewa-aws (dist Rewa) 10, Bahri (dist Sidhi) 8, Hanumana (dist Rewa) 7, Mauganj (dist Rewa) 7;
- ❖ **Odisha:** Aska (dist Ganjam) 10, Gop (dist Puri) 8;
- ❖ **Marathawada:** Tondapur- Arg (dist Hingoli) 9, Ardhapur (dist Nanded) 7;
- ❖ **Tamil Nadu:** Arcot (dist Ranipet), Kaveripakkam (dist Ranipet) 9 each, Ambur (dist Tirupathur), Wallajah (dist Ranipet), Ammundi (dist Vellore) 8 each, Cheyyar ARG (dist Tiruvannamalai) 7;
- ❖ **North Interior Karnataka:** Lingasugur (dist Raichur) 8, Sindhanur (dist Raichur) 8;
- ❖ **Uttarakhand:** Haripur (dist Dehradun) 7;
- ❖ **Nicobar Islands:** Iaf Carnicobar (dist Nicobar) 7;
- ❖ **Vidarbha:** Ballarpur (dist Chandrapur) 7

Table-1								
7 Days Rainfall Forecast								
S.No.	Subdivision	8- Aug	9- Aug	10- Aug	11- Aug	12- Aug	13- Aug	14- Aug
		Day 1	Day 2	Day 3	Day 4	Day 5	Day 6	Day 7
1	ANDAMAN & NICOBAR ISLANDS	FWS	FWS	FWS	FWS	FWS	FWS	FWS
2	ARUNACHAL PRADESH	FWS	FWS	FWS	FWS	FWS	FWS	FWS
3	ASSAM & MEHGHALAYA	FWS	FWS	FWS	FWS	FWS	FWS	FWS
4	NAGALAND, MANIPUR, MIZORAM AND TRIPURA	FWS	FWS	FWS	FWS	FWS	FWS	FWS
5	SUB HIMALAYAN WEST BENGAL & SIKKIM	FWS	FWS	FWS	FWS	FWS	FWS	FWS
6	GANGETIC WEST BENGAL	FWS	FWS	SCT	SCT	FWS	FWS	FWS
7	ODISHA	FWS	FWS	SCT	SCT	FWS	FWS	FWS
8	JHARKHAND	FWS	FWS	FWS	FWS	FWS	FWS	FWS
9	BIHAR	FWS	FWS	FWS	SCT	FWS	FWS	SCT
10	EAST UTTAR PRADESH	FWS	FWS	SCT	FWS	FWS	FWS	FWS
11	WEST UTTAR PRADESH	FWS	FWS	SCT	FWS	FWS	FWS	FWS
12	UTTARAKHAND	SCT	SCT	SCT	FWS	SCT	SCT	SCT
13	HARYANA, CHANDIGARH & DELHI	SCT	SCT	SCT	FWS	SCT	SCT	SCT
14	PUNJAB	ISOL	ISOL	SCT	SCT	SCT	SCT	SCT
15	HIMACHAL PRADESH	FWS	FWS	FWS	FWS	FWS	FWS	FWS
16	JAMMU AND KASHMIR AND LADAKH	SCT	SCT	SCT	SCT	FWS	FWS	FWS
17	WEST RAJASTHAN	DRY	ISOL	ISOL	ISOL	ISOL	ISOL	ISOL
18	EAST RAJASTHAN	ISOL	SCT	SCT	ISOL	ISOL	SCT	SCT
19	WEST MADHYA PRADESH	SCT	FWS	FWS	FWS	FWS	FWS	FWS
20	EAST MADHYA PRADESH	FWS	FWS	FWS	FWS	FWS	FWS	FWS
21	GUJRAT REGION	SCT	SCT	SCT	SCT	SCT	SCT	SCT
22	SAURASHTRA & KUTCH	SCT	SCT	SCT	SCT	SCT	SCT	SCT
23	KONKAN & GOA	FWS	FWS	FWS	FWS	FWS	FWS	FWS
24	MADHYA MAHARASHTRA	SCT	SCT	SCT	ISOL	SCT	SCT	SCT
25	MARATHWADA	FWS	SCT	SCT	SCT	SCT	SCT	SCT
26	VIDARBHA	FWS	FWS	FWS	FWS	FWS	FWS	FWS
27	CHHATTISGARH	FWS	FWS	FWS	FWS	FWS	FWS	FWS
28	COASTAL ANDHRA PRADESH	FWS	FWS	SCT	SCT	SCT	FWS	FWS
29	TELANGANA	FWS	FWS	FWS	FWS	FWS	FWS	FWS
30	RAYALASEEMA	FWS	FWS	FWS	SCT	ISOL	SCT	SCT
31	TAMILNADU & PUDUCHERRY	SCT	SCT	ISOL	ISOL	ISOL	ISOL	ISOL
32	COSTAL KARNATAKA	FWS	FWS	FWS	FWS	FWS	FWS	FWS
33	NORTH INTERIOR KARNATAKA	FWS	FWS	FWS	FWS	FWS	FWS	FWS
34	SOUTH INTERIOR KARNATAKA	FWS	FWS	FWS	FWS	FWS	FWS	FWS
35	KERALA AND MAHE	FWS	FWS	FWS	FWS	FWS	FWS	FWS
36	LAKSHADWEEP	FWS	FWS	FWS	FWS	FWS	FWS	FWS

- As the lead period increases forecast accuracy decrease.







- Action may be taken based on ORANGE AND REDCOLOUR warnings.
- Vulnerable regions likely urban and hilly areas action may be initiated for heavy rainfall warning.
- As the lead period increases forecast accuracy decreases.

Detailed districtwise Multi Hazard weather warning for next five days available at <https://mausam.imd.gov.in/responsive/districtWiseWarningGIS.php>

**Weather forecast over Delhi/NCR during 08<sup>th</sup> August to 11<sup>th</sup> August 2025****Past Weather:**

There has been no large change in minimum and appreciable rise maximum temperatures in past 24 hours over Delhi during the past 24 hours. The minimum temperatures are in the range of 24-26°C and maximum temperatures were in the range of 34-36°C. The minimum temperatures are near normal and maximum temperatures were near normal over Delhi. South westerly winds prevailed with wind speed upto 22 kmph in past 24 hours over Delhi. No significant rainfall has been recorded during past 24 hrs over Delhi. Partly cloudy sky conditions with a wind speed of upto 10-15 kmph from the southwest direction prevailed over the region in the forenoon today.

**Weather Forecast:**

**08.08.2025:** Partly cloudy sky. Possibility of thundery development towards evening/night. Possibility of very light to light rain/ thundershowers during early hours/morning. The maximum temperatures over Delhi are likely to be in the range of 35 to 37°C. The maximum temperature will be above normal up to 2 to 4 °C. The predominant surface wind will likely be from the southeast direction with a wind speed of upto 10-15 kmph during the afternoon hours. The wind speed remain same upto 10-15 kmph from the southeast direction during the evening and night.

**09.08.2025:** Partly cloudy sky. Possibility of very light to light rain/ thundershowers. The maximum and minimum temperatures over Delhi are likely to be in the range of 32 to 34°C and 24 to 26°C respectively. The minimum temperature will be below normal up to 1 to 3°C and the maximum temperature will be above normal up to 2 to 4°C. The predominant surface wind will likely to be from the southwest direction with a wind speed of upto 10-15 kmph during morning hours. The predominant surface wind will likely to be from the southeast direction with a wind speed of 10-15 kmph during afternoon hours. The wind speed will remain same upto 10-15 kmph from the southeast direction during evening and night.

**10.08.2025:** Partly cloudy sky. Possibility of very light to light rain/thundershowers. The maximum and minimum temperatures over Delhi are likely to be in the range of 33 to 35°C and 23 to 25°C respectively. The minimum temperature will be below normal up to 1 to 3°C and the maximum temperature will be below normal up to 0 to 2°C. The predominant surface wind will likely to be from the southeast direction with a wind speed of upto 10-15 kmph during morning hours. The predominant surface wind will likely to be from the northeast direction with a wind speed of 10-15 kmph during afternoon hours. The wind speed will remain same upto 10-15 kmph from the southeast direction during evening and night.

**11.08.2025:** Partly cloudy sky. Possibility of very light to light rain/thundershowers. The maximum and minimum temperatures over Delhi are likely to be in the range of 33 to 35°C and 23 to 25°C respectively. The minimum temperature will be below normal up to 2 to 4°C and the maximum temperature will be near normal. The predominant surface wind will likely to be from the northwest direction with a wind speed of 10-15 kmph during morning hours. The wind speed will remain same upto 10-15 kmph from the southeast direction in the afternoon, evening and night.

### Impact & Action Suggested due to

- ❖ **Extremely heavy rainfall ( $\geq 21$  cm) at isolated places over East Uttar Pradesh on 08<sup>th</sup> August.**
- ❖ **Very heavy rainfall** over Bihar, Jharkhand & Odisha on 08<sup>th</sup>; Uttarakhand on 08<sup>th</sup>, 10<sup>th</sup>, 11<sup>th</sup>, 13<sup>th</sup> & 14<sup>th</sup>; West Uttar Pradesh on 08<sup>th</sup>, 13<sup>th</sup> & 14<sup>th</sup>; Himachal Pradesh during 11<sup>th</sup>-14<sup>th</sup>; Arunachal Pradesh during 08<sup>th</sup>-10<sup>th</sup>; Assam & Meghalaya, Sub-Himalayan West Bengal & Sikkim on 08<sup>th</sup>, 11<sup>th</sup> & 12<sup>th</sup>; East Uttar Pradesh on 12<sup>th</sup> & 13<sup>th</sup>; Jammu-Kashmir on 13<sup>th</sup> & 14<sup>th</sup> August.

### Impact Expected

- Localized Flooding of roads, water logging in low lying areas and closure of underpasses mainly in urban areas of the above region.
- Occasional reduction in visibility due to heavy rainfall.
- Disruption of traffic in major cities due to water logging in roads leading to increased travel time.
- Minor damage to kutchha roads.
- Possibilities of damage to vulnerable structure.
- Localized Landslides/Mudslides/landslips/mudslips/landsinks/mudsinks.
- Damage to horticulture and standing crops in some areas due to inundation.
- It may lead to riverine flooding in some river catchments (for riverine flooding please visit Web page of CWC)

### Action Suggested

- Check for traffic congestion on your route before leaving for your destination.
- Follow any traffic advisories that are issued in this regard.
- Avoid going to areas that face the water logging problems often.
- Avoid staying in vulnerable structure.

### Agromet advisories for likely impact of Heavy / Heavy to Very Heavy / Extremely Heavy Rainfall

- In **Arunachal Pradesh**, harvest nearly mature banana bunches and keep them in a dry and safe place for ripening. Ensure proper drainage in rice, maize, finger millet, soybean, vegetables, and fruit orchards to avoid waterlogging. In rice fields, strengthen bunds to prevent field erosion and seedling washout. Provide strong support to fruit-bearing plants to prevent them from bending or breaking during heavy rains.
- In **Assam**, to prevent waterlogging, ensure proper drainage in *Sali* rice, green gram and pigeon pea fields and banana orchards in **Lower Brahmaputra Valley Zone**; *Sali* rice and sugarcane fields in **North Bank Plain Zone** and *Sali* rice fields in **Upper Brahmaputra Valley Zone**
- In **Meghalaya**, ensure proper drainage in rice, maize, turmeric, chilli, okra and bitter gourd fields to prevent waterlogging. Provide staking/support to tall and fragile crops like banana, papaya, bottle gourd etc. to prevent lodging.
- In **Nagaland**, provide proper drainage channels in maize fields to manage surface water runoff. Clean the drainage channels in rice fields to drain out excess water.
- In **Tripura**, maintain proper drainage in rice, chilli and ginger fields.
- In **Uttarakhand**, make necessary arrangements to drain out excess water from the fields of already sown / transplanted rice, sugarcane, maize, black gram, green gram, groundnut, pigeon pea, finger millet, soybean and vegetables in **Bhabar and Tarai Zone**; and barnyard millet, finger millet, green gram and black gram in **Sub Humid Sub Tropic Zone**. In **Hill Zone**, strengthen the bunds to prevent surface runoff of water. Postpone sowing of vegetable pea in case of excessive wet soil conditions. Maintain proper drainage channels in the crop fields.
- In **Himachal Pradesh**, provide proper drainage channels in maize, ginger and vegetable fields in **Mid Hills Sub Humid Zone**.
- In **Uttar Pradesh**, make necessary arrangements for drainage of excess water from the fields of paddy, pigeon pea, rapeseed, plantation and vegetable crops in **Bundelkhand Zone**. Make proper arrangement for drainage in fields of paddy, maize, pigeon pea, black gram, millets in **North Eastern Plain Zone** and pigeon pea, soybean, maize, groundnut, green gram, black gram and barnyard millet in **Eastern Plain Zone**.
- In **Madhya Pradesh**, provide adequate drainage in the fields of soybean, pigeon pea and transplanted rice in **Gird Zone**; rice and vegetables in **Bundelkhand Zone** and maize, soybean, cotton, sugarcane and vegetables in **Satpura Plateau Zone**.



- In **Sub-Himalayan West Bengal**, make provision to drain out excess water from rice, ginger, vegetable fields and fruit orchards in **Hill Zone** and *aman* paddy and vegetable fields in **Terai Zone**. Cover the chilli seedlings with plastic to protect them from heavy rains in **Terai Zone**.
- In **Bihar**, make provisions to drain out excess water from standing crops such as maize, nurseries of onion, chilli, and cauliflower in **North West Alluvial Plain Zone**; maize, finger millet, ragi, kodo, sava, china etc. in **North East Alluvial Zone**; and maize, vegetables, ragi, kodo, sava, in low-lying areas and strengthen field bunds in **South Bihar Alluvial Zone**.
- In **Tamil Nadu**, ensure proper drainage in sorghum fields to prevent waterlogging, especially in heavy soils and low-lying areas. Ensure proper drainage around the coconut plants to avoid root rot.
- In South **Telangana**, drain out excess water from rice nurseries and recently transplanted rice as well as from fields of cotton, maize, red gram, soybean, sugarcane, and vegetables.

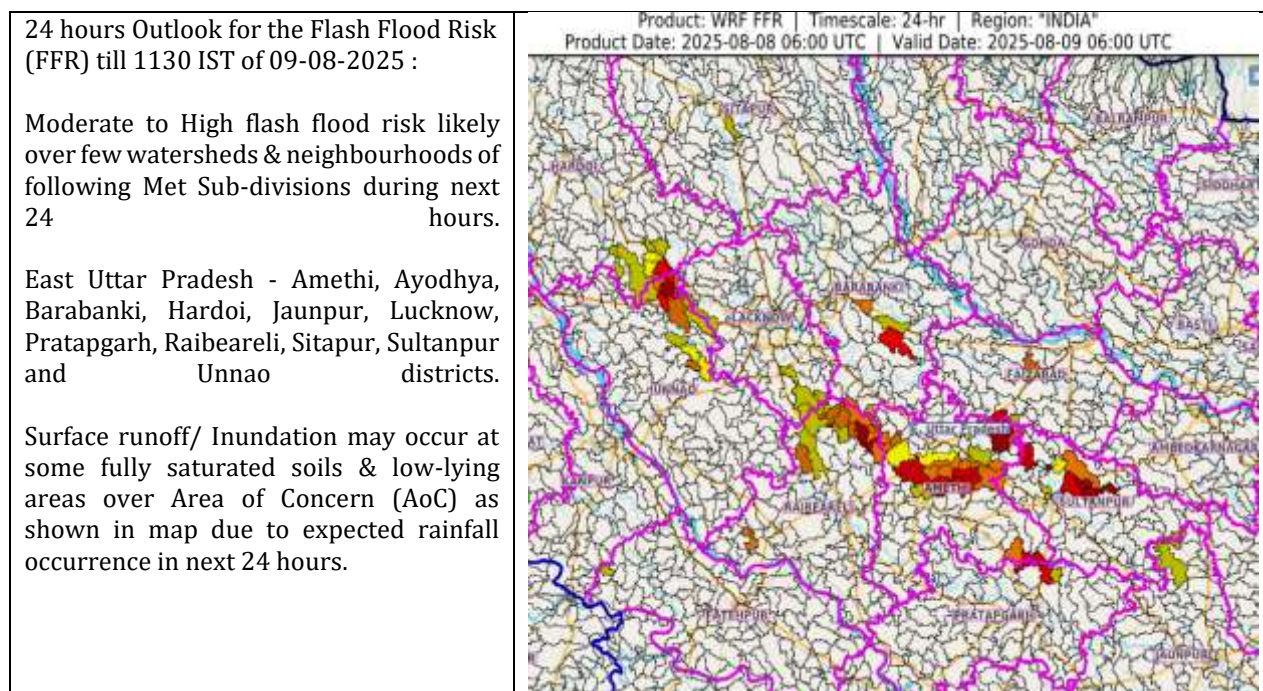
### Livestock / Fishery

- Keep the animals inside the shed during heavy rainfall and provide them balanced feed.
- Store feed and fodder in a safe place to prevent spoilage.
- Construct an outlet with proper netting around the ponds to drain out excess water, thereby preventing fish from escaping in case of overflow.

### Agromet advisories for likely impact of Thunderstorm / Gusty Winds / Squally Winds

- Provide mechanical support to horticultural crops and staking or support to vegetables and young fruit plants / fruit-bearing plants to avoid lodging due to strong winds.

### Flash flood guidance:

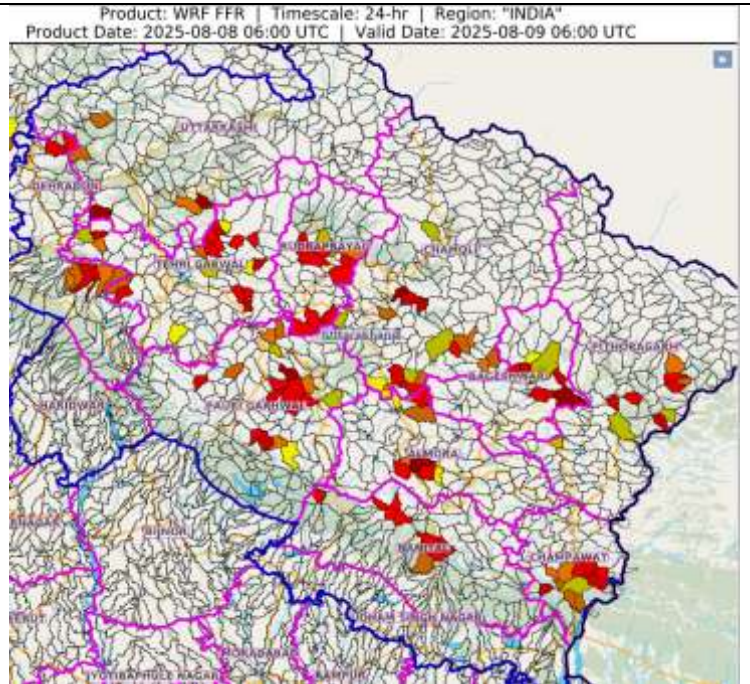


24 hours Outlook for the Flash Flood Risk (FFR) till 1130 IST of 09-08-2025 :

Low to Moderate flash flood risk likely over few watersheds & neighbourhoods of following Met Sub-divisions during next 24 hours.

Uttarakhand - Almora, Bageshwar, Chamoli, Champawat, Dehradun, Nanital, Pauri Garhwal, Pithoragarh, Rudrapur, Tehri Garwal and Uttarkashi districts.

Surface runoff/ Inundation may occur at some fully saturated soils & low-lying areas over Area of Concern (AoC) as shown in map due to expected rainfall occurrence in next 24 hours.



#### Legends & abbreviations:

- ❖ **Heavy Rain:**64.5-115.5mm; **Very Heavy Rain:**115.6-204.4mm; **Extremely Heavy Rain:** >204.4mm.
- ❖ **Obsy:** Observatory; Automatic Weather Station; **ARG:** Automatic Rain Gauge; **dist:** District; **NH:** National Highway; **KVK:** Krishi Vigyan Kendra; **DVC:** Damodar Valley Corporation; **PTO:** Part Time Office, **Aero:** Aerodrome, **IAF:** Indian Air Force.
- ❖ **Region wise classification of meteorological Sub-Divisions:**
  - **Northwest India:** Western Himalayan Region (Jammu-Kashmir-Ladakh-Gilgit-Baltistan-Muzaffarabad, Himachal Pradesh and Uttarakhand); Punjab, Haryana-Chandigarh-Delhi; West Uttar Pradesh, East Uttar Pradesh, West Rajasthan and East Rajasthan.
  - **Central India:** West Madhya Pradesh, East Madhya Pradesh, Vidarbha and Chhattisgarh.
  - **East India:** Bihar, Jharkhand, Sub-Himalayan West Bengal & Sikkim; Gangetic West Bengal, Odisha and Andaman & Nicobar Islands.
  - **Northeast India:** Arunachal Pradesh, Assam & Meghalaya and Nagaland, Manipur, Mizoram & Tripura.
  - **West India:** Gujarat Region, Saurashtra & Kutch, Konkan & Goa, Madhya Maharashtra and Marathawada.
  - **South India:** Coastal Andhra Pradesh & Yanam, Telangana, Rayalaseema, Coastal Karnataka, North Interior Karnataka, South Interior Karnataka, Kerala & Mahe, Tamil Nadu, Puducherry & Karaikal and Lakshadweep.



## LEGENDS

1. अंडमान और निकोबार द्वीपसमूह

2. अरुणाचल प्रदेश

3. असम और मेघालय

4. नागालैंड, मणिपुर, मिजोरम और त्रिपुरा

5. उप-हिमालयी पश्चिम बंगाल और सिक्किम

6. गंगीय पश्चिम बंगाल

7. ओडिशा

8. झारखंड

9. बिहार

10. पूर्वी उत्तर प्रदेश

11. पश्चिम उत्तर प्रदेश

12. उत्तराखंड

13. हरियाणा, चंडीगढ़ और दिल्ली

14. पंजाब

15. हिमाचल प्रदेश

16. जम्मू और कश्मीर और लद्दाख

17. पश्चिम राजस्थान

18. पूर्वी राजस्थान

19. पश्चिम मध्य प्रदेश

20. पूर्वी मध्य प्रदेश

21. गुजरात

22. सौराष्ट्र

23. कोंकण और गोवा

24. मध्य महाराष्ट्र

25. मराठवाड़ा

26. विदर्भ

27. छत्तीसगढ़

28. तटीय आंध्र प्रदेश और यनम

29. तेलंगाना

30. रायलसीमा

31. तमिलनाडु, पुडुचेरी और कराईकल

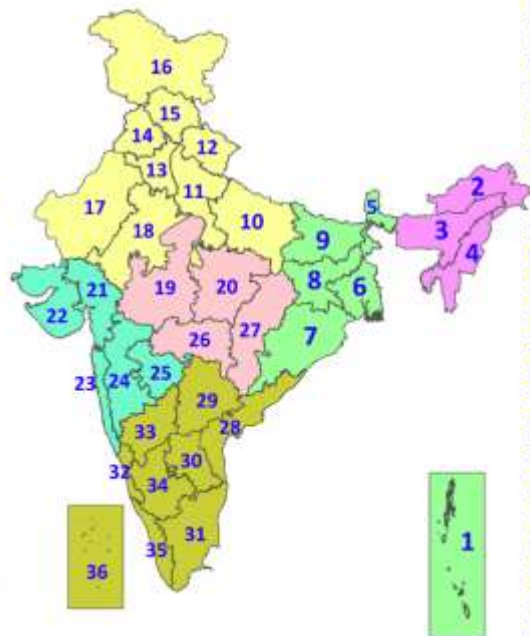
32. तटीय कर्नाटक

33. आंतरिक उत्तरी कर्नाटक

34. आंतरिक दक्षिणी कर्नाटक

35. केरल और माहे

36. लक्षद्वीप



1. Andaman & Nicobar Islands

2. Arunachal Pradesh

3. Assam & Meghalaya

4. Nagaland, Manipur, Mizoram & Tripura

5. Sub-Himalayan West Bengal & Sikkim

6. Gangetic West Bengal

7. Odisha

8. Jharkhand

9. Bihar

10. East Uttar Pradesh

11. West Uttar Pradesh

12. Uttarakhand

13. Haryana, Chandigarh & Delhi

14. Punjab

15. Himachal Pradesh

16. Jammu & Kashmir and Ladakh

17. West Rajasthan

18. East Rajasthan

19. West Madhya Pradesh

20. East Madhya Pradesh

21. Gujarat

22. Saurashtra

23. Konkan & Goa

24. Madhya Maharashtra

25. Marathwada

26. Vidarbha

27. Chhattisgarh

28. Coastal Andhra Pradesh & Yanam

29. Telangana

30. Rayalaseema

31. Tamilnadu, Puducherry & Karaikal

32. Coastal Karnataka

33. North Interior Karnataka

34. South Interior Karnataka

35. Kerala & Mahe

36. Lakshadweep

## SPATIAL DISTRIBUTION (% of Stations reporting)

% Stations	Category	% Stations	Category
76-100	Widespread (WS/Most Places)	26-50	Scattered (SCT/A Few Places)
51-75	Fairly Widespread (FWS/Many Places)	1-25	Isolated (ISOL)



Fog



Heavy Snow



Cold Wave



Heavy Rain



Dust Storm



Cold Day



Very Heavy Rain



Heat Wave



Ground Frost



Extremely Heavy Rain



Warm Night



Thunder & Lightning



Hot Day



Hailstorm



Hot & Humid



Dust Raising Winds



Strong Surface Winds

### COLOUR CODED WARNING

No Warning (No Action)

Watch (Be Aware)

Alert (Be Prepared To Take Action)

Warning (Take Action)

### Probabilistic Forecast

Terms	Probability of Occurrence (%)
Unlikely	< 25
Likely	25 - 50
Very Likely	50 - 75
Most Likely	> 75

\* Red colour warning does not mean "Red Alert", Red colour warning means "Take Action".

Forecast and Warning for any day is valid from 0830 hours IST of day till 0830 hours IST of next day.

For more details, kindly visit <https://mausam.imd.gov.in> or contact: 011-2434-4599

(Service to the Nation since 1875)

### DEFINITION/CRITERIA

#### Rain/ Snow \*

Heavy: 64.5 to 115.5 mm/cm \*  
Very Heavy: 115.6 to 204.4 mm/cm \*  
Extremely Heavy: > 204.4 mm/cm \*

#### Heat Wave

When maximum temperature of a station reaches  $\geq 40^{\circ}\text{C}$  for plains and  $\geq 30^{\circ}\text{C}$  for hilly regions  
(a) Based on Departure from normal

Heat Wave: Maximum Temperature Departure from normal  $4.5^{\circ}\text{C}$  to  $6.4^{\circ}\text{C}$ .

Severe Heat Wave: Maximum Temperature Departure from normal  $\geq 6.5^{\circ}\text{C}$

(b). Based on Actual maximum temperature

Heat Wave: When actual maximum temperature  $\geq 45^{\circ}\text{C}$ .

Severe Heat Wave: When actual maximum temperature  $\geq 47^{\circ}\text{C}$ .

(c). Criteria for heat wave for coastal stations

When maximum temperature departure is  $> 4.5^{\circ}\text{C}$  from normal. Heat Wave may be described provided maximum temperature  $\geq 37^{\circ}\text{C}$ .

#### Warm Night

When maximum temperature remains  $40^{\circ}\text{C}$

Warm Night: When minimum temperature departure  $4.5^{\circ}\text{C}$  to  $6.4^{\circ}\text{C}$ .

Severe Warm Night: When minimum temperature departure  $> 6.4^{\circ}\text{C}$ .

#### Cold Wave

When minimum temperature of a station  $\leq 10^{\circ}\text{C}$  for plains and  $\leq 0^{\circ}\text{C}$  for hilly regions.

(a). Based on departure

Cold Wave: Minimum Temperature Departure from normal  $-4.5^{\circ}\text{C}$  to  $-6.4^{\circ}\text{C}$ .

Severe Cold Wave: Minimum Temperature Departure from normal  $\leq -6.5^{\circ}\text{C}$

(b) Based on actual Minimum Temperature (for Plains only)

Cold Wave: When Minimum Temperature is  $\leq 4.0^{\circ}\text{C}$

Severe Cold Wave: When Minimum Temperature is  $\leq 2.0^{\circ}\text{C}$

(c) For Coastal Stations

When Minimum Temperature departure is  $\leq -4.5^{\circ}\text{C}$  & actual Minimum Temperature is  $\leq 15^{\circ}\text{C}$

#### Cold Day

When minimum temperature of a station  $\leq 10^{\circ}\text{C}$  for plains and  $\leq 0^{\circ}\text{C}$  for hilly regions

Based on departure

Cold Day: Maximum Temperature Departure from normal  $-4.5^{\circ}\text{C}$  to  $-6.4^{\circ}\text{C}$ .

Severe Cold Day: Maximum Temperature Departure from normal  $\leq -6.5^{\circ}\text{C}$

#### Fog

Phenomenon of small droplets suspended in air and the horizontal visibility  $< 1\text{km}$

Moderate Fog: When the visibility between 500-200 metres

Dense Fog: when the visibility between 50- 200 metres

Very Dense Fog: when the visibility  $< 50$  metres

#### Thunderstorm

Sudden electrical discharges manifested by a flash of light (Lightning) and a sharp rumbling sound (thunder)

#### Dust/Sand Storm

An ensemble of particles of dust or sand energetically lifted to great heights by a strong and turbulent wind.

#### Frost

Ice deposits on ground

Air temperature  $\leq 4^{\circ}\text{C}$  ( over Plains)

#### Squall

A strong wind that rises suddenly, lasts for atleast 1 minute.

Moderate: Wind speed 52-61 kmph

Severe: Wind speed 62-67 kmph

Very Severe: Wind speed  $> 67$  kmph

#### Sea State

Effect of various waves in the sea over specific area

Rough to very rough: Wind speed 41-62 kmph (22-33 knots) & Wave height 2.5-6 metre

High to very high: Wind speed 63-117 kmph ( 34-63 knots) & Wave height 6-14 metre

Phenomenal: Wind speed  $> 117$  kmph ( $> 63$  knots) & Wave height  $> 14$  metre

#### Cyclone

Cyclonic Storm: Wind speed 62-87 kmph (34-47 knots)

Severe Cyclonic Storm: Wind speed 88-117 kmph (48-63 knots)

Very Severe Cyclonic Storm: Wind speed 118-165 kmph (64 - 89 knots)

Extremely Severe Cyclonic Storm: Wind speed 166-220 kmph (90 -119 knots)

Super Cyclone Storm: Wind speed  $> 220$  kmph ( $> 119$  knots)

\* Red colour warning does not mean "Red Alert", Red colour warning means "Take Action".

Forecast and Warning for any day is valid from 0830 hours IST of day till 0830 hours IST of next day.

For more details, kindly visit <https://mausam.imd.gov.in> or contact: 011-2434-4599

(Service to the Nation since 1875)

**Hot and Humid:** When maximum temperatures remain  $3^{\circ}\text{C}$  above normal along with the above normal relative humidity.